

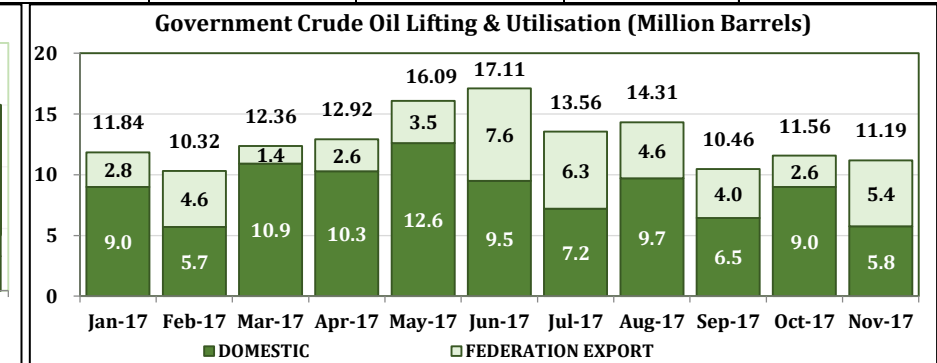
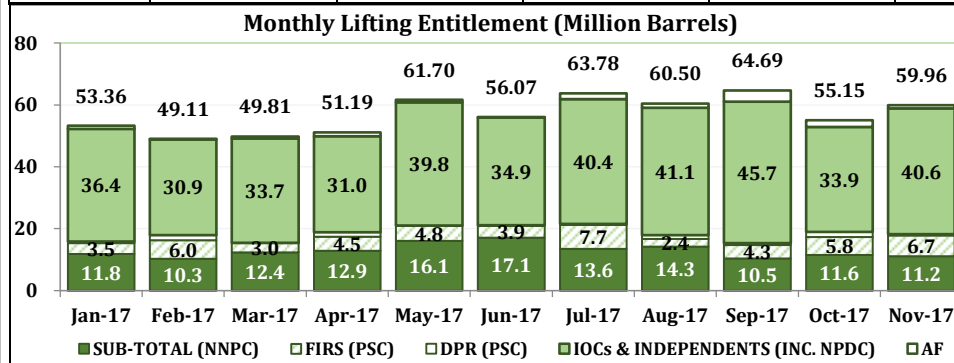


Crude Oil & Condensate Lifting and utilization (Volumes)

LIFTING MONTH	NIGERIAN GOVERNMENT					SUB-TOTAL GOVERNMENT LIFTING	IOCs & INDEPENDENTS (INC. NPDC)	AF	GRAND TOTAL
	FIRS (PSC)	DPR (PSC)	NNPC		SUB-TOTAL (NNPC)				
	Barrels	Barrels	FEDERATION EXPORT	DOMESTIC					
Jan-17	3,532,322	582,000	2,846,590	8,993,048	11,839,638	15,953,960	36,399,715	1,008,000	53,361,675
Feb-17	5,988,451	1,690,000	4,630,126	5,693,902	10,324,028	18,002,479	30,948,039	159,000	49,109,518
Mar-17	3,021,435	141,200	1,428,409	10,927,538	12,355,947	15,518,582	33,735,943	558,000	49,812,525
Apr-17	4,546,069	1,414,539	2,620,933	10,297,662	12,918,595	18,879,203	31,043,855	1,268,126	51,191,184
May-17	4,842,786	140,000	3,478,582	12,607,544	16,086,126	21,068,912	39,840,375	791,000	61,700,287
Jun-17	3,870,267	190,000	7,601,969	9,503,590	17,105,559	21,165,826	34,876,868	26,000	56,068,694
Jul-17	7,746,234	262,700	6,349,550	7,206,304	13,555,854	21,564,788	40,403,794	1,806,790	63,775,372
Aug-17	2,448,119	1,267,054	4,599,572	9,706,674	14,306,246	18,021,419	41,079,311	1,400,000	60,500,730
Sep-17	4,302,468	668,519	4,008,861	6,452,172	10,461,033	15,432,020	45,698,160	3,559,312	64,689,492
Oct-17	5,773,143	1,720,306	2,561,037	9,002,509	11,563,546	19,056,995	33,911,195	2,183,483	55,151,673
Nov-17	6,737,220	350,000	5,424,555	5,766,199	11,190,754	18,277,974	40,649,805	1,027,800	59,955,579
TOTAL	52,808,514	8,426,318	45,550,184	96,157,142	141,707,326	202,942,158	408,587,060	13,787,511	625,316,729

Crude Oil & Condensate Lifting and utilization (Values)

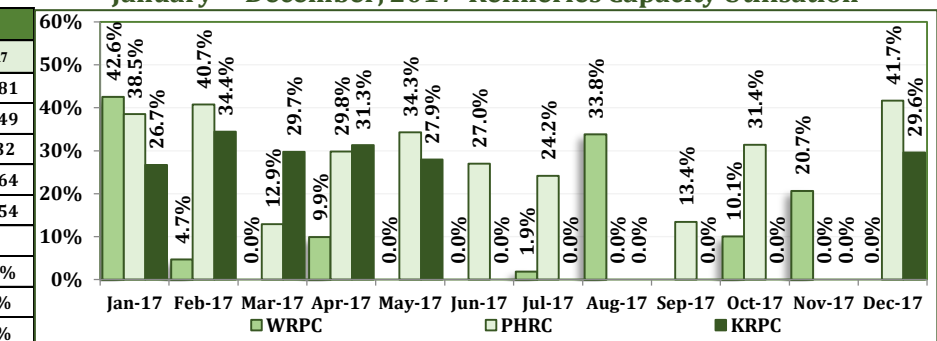
LIFTING MONTH	NIGERIAN GOVERNMENT					SUB-TOTAL GOVERNMENT LIFTING	IOCs & INDEPENDENTS (INC. NPDC)	AF	GRAND TOTAL
	FIRS (PSC)	DPR (PSC)	NNPC		SUB-TOTAL (NNPC)				
	USD	USD	FEDERATION EXPORT	DOMESTIC					
Jan-17	196,919,320	32,021,314	157,651,000	498,003,069	655,654,069	884,594,703	2,015,903,749	55,211,751	2,955,710,204
Feb-17	328,632,888	92,396,380	255,498,806	311,957,345	567,456,151	988,485,419	1,707,769,296	8,769,164	2,705,023,879
Mar-17	154,659,432	6,735,341	71,814,310	566,554,156	638,368,465	799,763,238	1,696,099,267	27,917,668	2,523,780,173
Apr-17	234,097,527	69,623,049	133,810,412	539,603,629	673,414,042	977,134,617	1,584,928,361	66,976,104	2,629,039,082
May-17	243,548,132	6,705,580	175,461,727	639,112,108	814,573,835	1,064,827,547	2,009,572,008	40,549,307	3,114,948,862
Jun-17	176,786,949	1,203,280	351,903,874	443,202,067	795,105,941	973,096,170	1,614,490,268	1,203,280	2,588,789,717
Jul-17	373,531,605	12,005,149	308,964,905	349,549,762	658,514,667	1,044,051,421	1,966,021,901	90,364,828	3,100,438,149
Aug-17	127,587,422	67,677,169	239,479,415	502,248,529	741,727,944	936,992,535	2,138,818,432	70,450,720	3,146,261,687
Sep-17	244,498,741	37,598,234	227,828,174	369,823,011	597,651,185	879,748,160	2,597,078,907	207,616,209	3,684,443,276
Oct-17	336,994,305	100,575,925	147,799,226	530,416,321	678,215,547	1,115,785,776	1,957,038,638	131,625,038	3,204,449,452
Nov-17	426,704,785	21,378,000	342,184,908	368,796,216	710,981,124	1,159,063,909	2,564,219,517	65,225,673	3,788,509,099
TOTAL	2,843,961,105	447,919,421	2,412,396,757	5,119,266,214	7,531,662,971	10,823,543,497	21,851,940,341	765,909,742	33,441,393,579



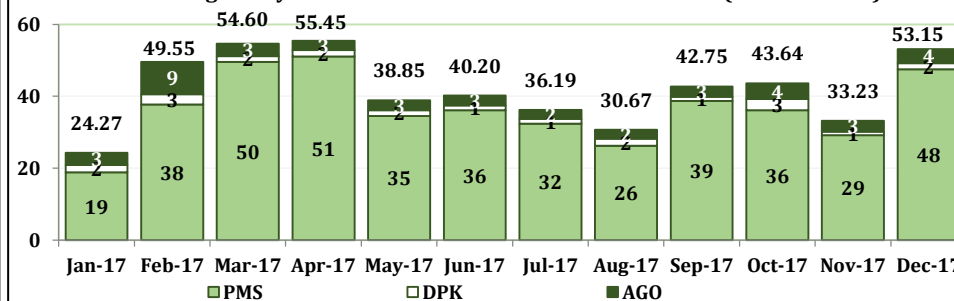
Refineries Operational Performance for the month of December, 2017

Operational Parameters	Units	WRPC		PHRC		KRPC		Consolidated	
		Nov-17	Dec-17	Nov-17	Dec-17	Nov-17	Dec-17	Nov-17	Dec-17
Total Crude Available	MT	301,263	195,837	195,701	487,449	235,795	237,695	732,759	920,981
Closing Stock	MT	193,120	195,837	195,701	117,324	235,795	100,088	624,616	413,249
Crude Processed	MT	105735	0	0	370125	0	137607	105735	507732
(i) Finished Products	MT	55,187	24,343	0	229,579	0	46,342	55,187	300,264
(ii) Intermediate Products	MT	41425	-25697	0	116,439	-1,863	60,812	39,562	151,554
Plant Capacity	kpd	125	125	210	210	110	110	445	445
Capacity Utilization	%	20.67%	0.00%	0.00%	41.69%	0.00%	29.59%	5.81%	26.99%
Losses	%	3.57%	0.00%	0.00%	1.84%	0.00%	1.18%	3.57%	1.66%
Plant Consumption	%	6.97%	0.00%	0.00%	4.67%	0.00%	20.95%	8.73%	9.35%

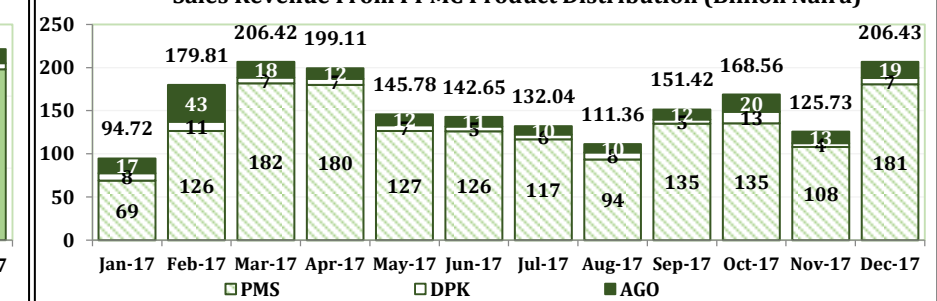
January - December, 2017 Refineries Capacity Utilisation



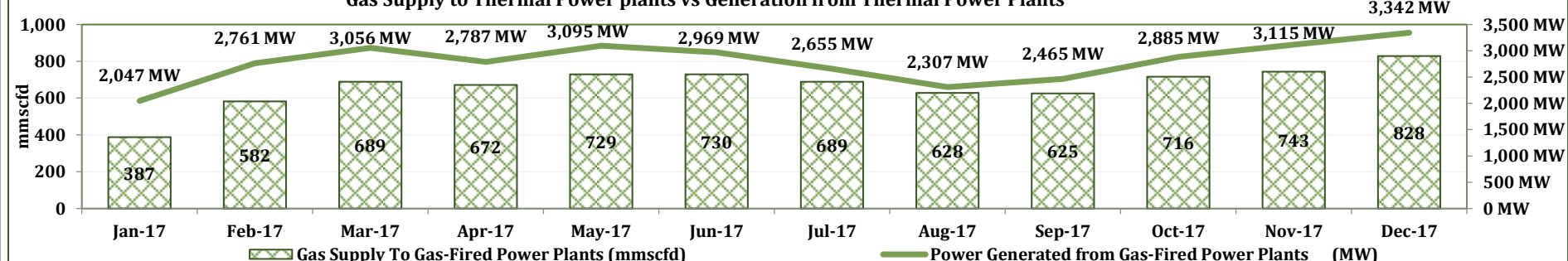
Average Daily PPMC Product Distribution Sales Volume (Million Litres)



Sales Revenue From PPMC Product Distribution (Billion Naira)



Gas Supply to Thermal Power plants vs Generation from Thermal Power Plants

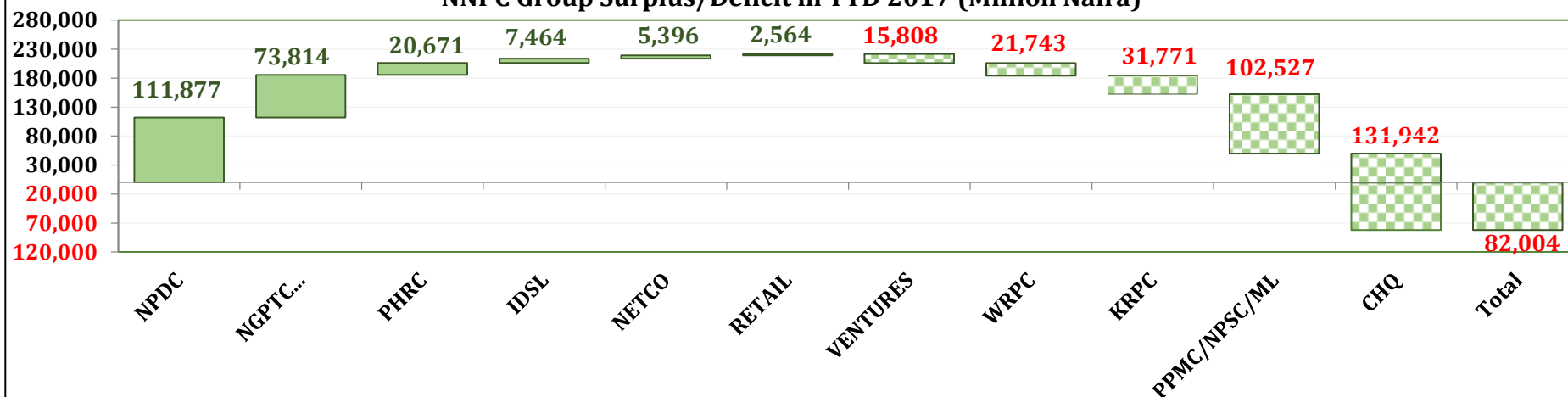




NNPC Group Financial Report by Entity

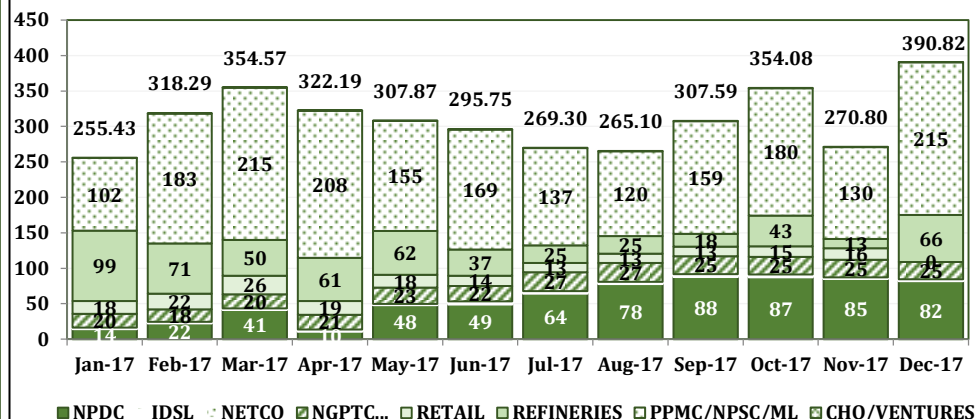
SBU/CSU	MONTHLY BUDGET (=N= MILLION)			(=N= MILLION)						2017 YTD (=N= MILLION)					
				NOVEMBER, 2017			DECEMBER, 2017			BUDGET			ACTUAL		
	Revenue	Expense	Surplus/ (Deficit)	Revenue	Expense	Surplus/ (Deficit)	Revenue	Expense	Surplus/ (Deficit)	Revenue	Expense	Surplus/ (Deficit)	Revenue	Expense	Surplus/ (Deficit)
NPDC	71,406	24,255	47,151	85,131	78,590	6,541	81,710	58,329	23,380	856,878	291,060	565,818	668,475	556,598	111,877
IDSL	2,405	1,538	867	523	982	(459)	832	831	1	28,855	18,454	10,401	17,927	10,463	7,464
NETCO	1,250	1,136	114	1,759	1,514	245	1,759	1,527	232	14,998	13,636	1,362	18,126	12,730	5,396
NGNGPTC/...	24,852	15,610	9,242	24,693	16,474	8,220	24,718	16,354	8,365	298,224	187,324	110,900	275,502	201,688	73,814
Sub-Total	99,913	42,539	57,373	112,106	97,559	14,547	109,019	77,041	31,978	1,198,954	510,474	688,480	980,030	781,478	198,551
KRPC	8,924	9,307	(384)	(165)	2,901	(3,066)	15,477	19,880	(4,403)	107,082	111,690	(4,607)	109,524	141,295	(31,771)
PHRC	37,830	30,685	7,145	2	3,034	(3,032)	50,715	55,662	(4,947)	453,965	368,220	85,746	372,399	351,728	20,671
WRPC	26,245	22,098	4,147	13,247	18,294	(5,047)	36	1,781	(1,745)	314,940	265,180	49,760	89,361	111,104	(21,743)
Sub-Total	72,999	62,091	10,908	13,084	24,229	(11,145)	66,228	77,323	(11,095)	875,988	745,089	130,898	571,284	604,127	(32,843)
RETAIL	26,502	25,115	1,387	16,006	16,446	(440)	0	0	0	318,025	301,376	16,649	187,646	185,082	2,564
PPMC/NPSC..	166,378	168,890	(2,512)	129,545	127,151	2,393	215,265	226,325	(11,060)	1,996,534	2,026,678	(30,144)	1,971,666	2,074,192	(102,527)
Sub-Total	192,880	194,005	(1,125)	145,550	143,597	1,954	215,265	226,325	(11,060)	2,314,559	2,328,054	(13,496)	2,159,312	2,259,275	(99,963)
CHQ	476	16,165	(15,689)	38	10,342	(10,304)	243	14,115	(13,871)	5,707	193,978	(188,271)	916	132,858	(131,942)
VENTURES	1,467	2,839	(1,371)	23	1,866	(1,844)	69	2,393	(2,325)	17,607	34,065	(16,458)	268	16,076	(15,808)
Sub-Total	1,943	19,004	(17,061)	60	12,208	(12,148)	312	16,508	(16,196)	23,315	228,043	(204,729)	1,185	148,934	(147,750)
Grand Total	367,735	317,638	50,096	270,801	277,594	(6,792)	390,824	397,197	(6,373)	4,412,815	3,811,661	601,155	3,711,810	3,793,814	(82,004)

NNPC Group Surplus/Deficit in YTD 2017 (Million Naira)



- The Corporation wishes to sympathise with Nigerians over the unfortunate hardship created by the recent fuel scarcity especially during the yuletide period.
- The Corporation has stepped up the resuscitation of some of its critical downstream infrastructure as part of its commitments to ensure adequate supply and distribution of petroleum products, especially PMS during the yuletide period.
- We also want to reaffirm our commitments to ensure stable petroleum products supply nationwide at all times.

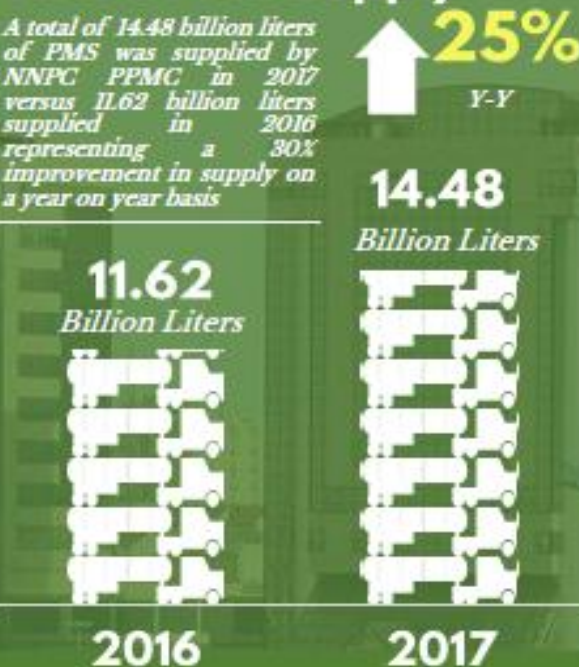
NNPC Group Revenue: January - December 2017 (Billion Naira)



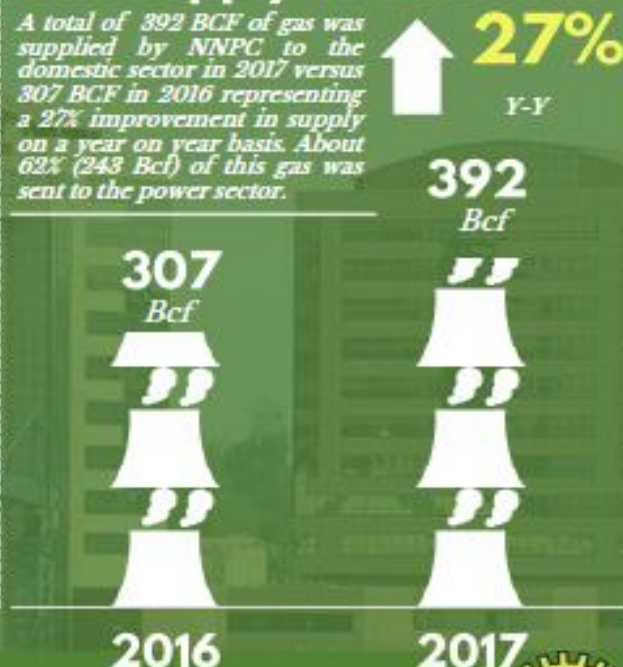
NNPC - FAAC Payments



NNPC PMS Supply



Gas Supply To Domestic



NNPC Hydrocarbon Flash Dash-Board - 2017

Group

Financial Performance

Change

Revenue

2017 NNPC Hydrocarbon

Flash Dash - Dash Board